

STATUS HV500

VACUUM PACKING MACHINE

USER MANUAL



STATUS

innovations

1. SAFETY INSTRUCTIONS AND INTRODUCTION

1.1. OPERATING CONDITIONS

Maximum ambient temperature in normal use is +40°C; the average of temperatures over a 24-hour period should not exceed +35°C. Minimum ambient temperature allowed is -5°C.

Surrounding air should be clean; relative humidity should not exceed 50% at the maximum temperature of +40°C. Higher relative humidity is allowed at lower ambient temperature (e.g. 90 % at +20°C).

1.2. IMPORTANT SAFETY INSTRUCTIONS

- a.) Working surface must be dry, normal temperature (not hot) and clear from obstructions.
- b.) Check the power cable and electrical outlet before you plug in the machine.
- c.) Machine should be cleaned only with a dry or slightly damp cloth.
- d.) Never touch the Sealing Strip when using the machine (*Item 6 in Figure 1*) – it may be hot.
- e.) Use the machine only for the purposes described in the User Manual.
- f.) If the supply cord is damaged, it must be replaced by the manufacturer, its service agent or similarly qualified persons in order to avoid a hazard.
- g.) This appliance can be used by children aged from 8 years and above and persons with reduced physical, sensory or mental capabilities or lack of experience and knowledge if they have been given supervision or instruction concerning use of the appliance in a safe way and understand the hazards involved.
- h.) Children shall not play with the appliance. Cleaning and user maintenance shall not be made by children without supervision.
- i.) Warranty is invalid if:
 - the machine has been tampered with.
 - you use the machine for unintended purposes.
 - you do not respect safety regulations and do not follow the instructions in the User Manual.

The manufacturer will not accept responsibility for any damage that may occur as a result of not following the User Manual or improper use.

1.3. TIME INTERVALS FOR USING STATUS HV500

For the proper operation of the machine there should be at least a 120-second time interval between individual cycles of sealing or vacuum packing.

Wait for the machine to cool down (approximately 45 minutes).

While the machine is cooling down, do not unplug it.

When the cycles follow each other too quickly, the machine automatically stops.

1.4. MAINTENANCE AND CLEANING

- a.) Unplug the machine.
- b.) Use a soft, damp cloth to clean the machine. Do not use anything which could scratch or damage the surface. **Never** submerge the machine in water or place it under running water. Never squirt detergent directly onto or into the machine.
- c.) Before using the machine make sure that it is completely dry.
- d.) The Sealing Strip is covered with Teflon. Remove any plastic residues using a soft cloth.
- e.) You can only clean the Sealing Strip when the machine has cooled down. Never try to clean the sealing strip using a sharp object.
- f.) If the black foam seals become contaminated with grease or liquid, then you can wash them in soapy water, rinse and dry them before replacing them. This will increase the lifespan of the foam seals.

1.5. GENERAL INFORMATION

STATUS HV500 Vacuum Sealer is a household machine intended for long term food storage in a vacuum and is designed to vacuum pack and seal bags and vacuum containers. It has been developed and manufactured by the Status d.o.o. Metlika company from Metlika, Slovenia.

The most important advantages of vacuum packing:

- Vitamins, minerals, nutrients and flavour are preserved.
- Multiplication of moulds and bacteria is suppressed, which extends food shelf life.
- Storage in vacuum prevents mixing of odours in the refrigerator or freezer.

Products for extending freshness of foods also include Status' vacuum containers, lids, stoppers and a jug, which are vacuum packed with a manual or electric

vacuum pump. STATUS HV500 includes an adjustable hose for vacuum packing all of the mentioned products.

Two sets of premade vacuum bags and two sets of foil rolls are packed with the product. You can determine the length of the bags according to your needs.

Before using the machine for the first time, read the User Manual carefully and follow the instructions. If you have any questions, opinions or comments then please call or email us.

STATUS HV500 is simple to use and efficient. You will be able to store food in a completely natural and healthier way. It will stay fresh longer and you will save time and money.

1.6. TECHNICAL DATA

Dimensions	Width: 340 mm Depth: 170 mm Height: 90 mm
Max Bag Width	280 mm
Weight	Approx. 2.8 kg
Material	ABS plastic (outer casing)
Pump	Single-piston pump (self-oiling – no maintenance necessary)
Vacuum pressure	-750 mbar
Motor	230 V AC, 50 Hz Automatic cut-off in case of overheating.
Max RPM	2900
Transformer	220V AC, 50Hz/24V AC 0,8A /12V AC 0,4A
Pump volume	14 litres/min
Controls	Electronic
Appliance rated power and voltage	200 W, 230 V AC

1.7. COMPONENTS AND FUNCTION BUTTONS

The figure below shows the vacuum packing machine. Important points are marked with numbers and explained in the table.

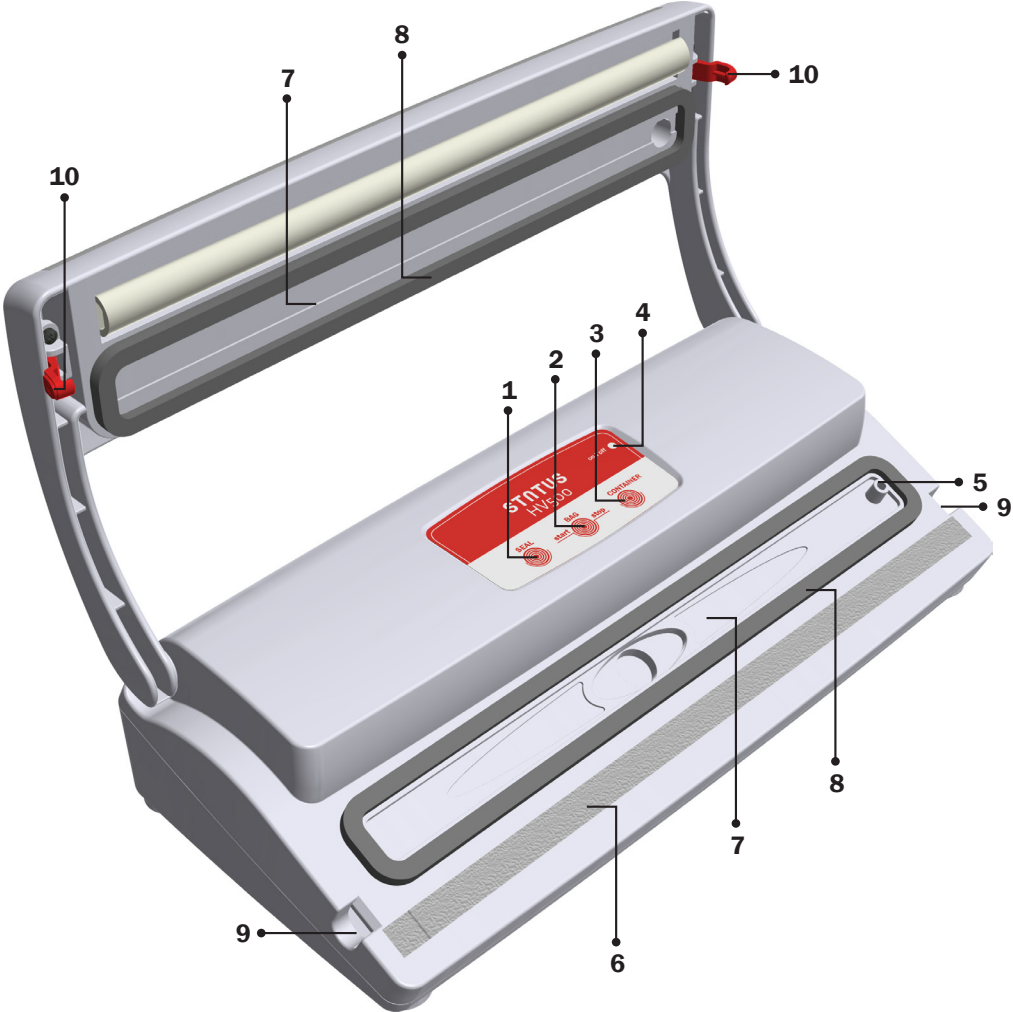


Figure 1: HV500 – components are marked with numbers.

1.	Seal Button Starts the sealing process (without vacuum packing). You can use this to seal the open end of a roll.
2.	Vacuum Packing of Bags Button Start of vacuum packing and sealing process. The bag will first be vacuum packed and then automatically sealed. Start/Stop Starting and Stopping of vacuum packing process when storing sensitive foods.
3.	Vacuum Packing of Containers Button Vacuum packing of containers with Accessory Port and Hose. Vacuum packing process automatically stops when the correct vacuum is reached.
4.	On/Off Indicator When the appliance is connected to electric mains, indicator light turns on. During the sealing process, the light illuminates 100 %.
5.	Accessory Port used for vacuum packing of containers
6.	Sealing Strip (covered with Teflon foil)
7.	Vacuum Channel When vacuum packing, the bag must be set to the point in the middle of the Channel.
8.	Vacuum Channel Gasket/Foam Seal
9.	Space for Lock
10.	Lock for Securing the Lid (manual operation or transportation)

2. USAGE

2.1. GENERAL INSTRUCTIONS

- a.) When taking the appliance out of its packaging check that all components are included and undamaged. Make sure no polystyrene fragments are left in the Vacuum Channel (Item 7 in Figure 1).
- b.) **Read the User Manual before you use the machine for the first time.**
- c.) HV500 is a professional machine with the technology and capacity adjusted to be used in households. The machine is due to its functionality suitable to be stored on the kitchen top where it can be conveniently used every day. Place it on an even, smooth surface with enough space for placing food into bags.

2.2. INSTRUCTIONS FOR USE

Use the appliance according to the following instructions:

2.2.1. THE APPLIANCE IS ACTIVATED WHEN YOU PLUG IT INTO THE WALL SOCKET.

Every time you start working with HV500 you should warm up the machine. Close the lid, press the Seal but-

ton (Item 1 in Figure 1) and press down on the lid. This first cycle will warm the sealing strip.

When using vacuum bags skip paragraph 2 and continue with instructions in paragraph 3.

2.2.2. FIRST, MAKE A BAG FROM THE ROLL

When using vacuum bags skip paragraph 2.2.2. and continue with instructions in paragraph 2.2.3.

- a.) Determine the length needed. A bag should be about 5 cm longer than the item to be vacuum packed. To reuse the bag leave additional 2.5 cm of bag material for each time you plan to reuse it or next time use the bag for smaller items.
- b.) Cut off the desired length with the included cutter.
- c.) Place the roll on the Sealing Strip and extend it to the Black Gasket (see Figure 2). Make sure that the edge is straight and level.
- d.) Close the lid.
- e.) Press the Seal button (Item 1 in Figure 1) and press down on lid with your hand (on the left and the right side) and hold it. The lid will automatically stick down and seal the bag. If the lid can be opened during the process, you didn't press down hard enough, so repeat the procedure. During sealing, the light (On/Off) will be illuminated 100%.
- f.) When the sealing process is completed, the lid lifts slightly. Open the lid completely and check the seal. It should be smooth and transparent over its whole width.

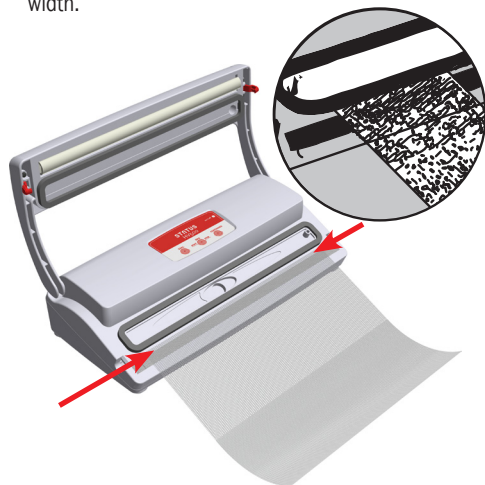


Figure 2: Place the roll on the Sealing Strip and extend it to the Black Gasket to seal (see arrows).

WARNING: When using new vacuum appliance or one that has not been in use for a while black gaskets can become stiff. Same can happen if vacuum appliance is stored below room temperatures (in basement). Thus we propose that the lid

is pushed down with both hands or to lock vacuum appliance and push with one hand. The push has to be energetic!

2.2.3. WHEN THE BAG IS MADE, PLACE FOOD IN IT AND VACUUM PACK.

The bag should be at least 5 cm longer than the space, occupied by the item to be vacuum packed.

- a.) Place the items to be vacuum packed in the bag.
- b.) Make sure that inner surfaces (for the sealing edge) are clean, dry and free from food materials.*
- c.) Place the filled bag on the work surface in front of the appliance and pull it to the middle of the Vacuum Channel (see Figure 3 and Item 7 in Figure 1).
- d.) Make sure that the bag placed on the Sealing Strip is completely smooth (not creased).

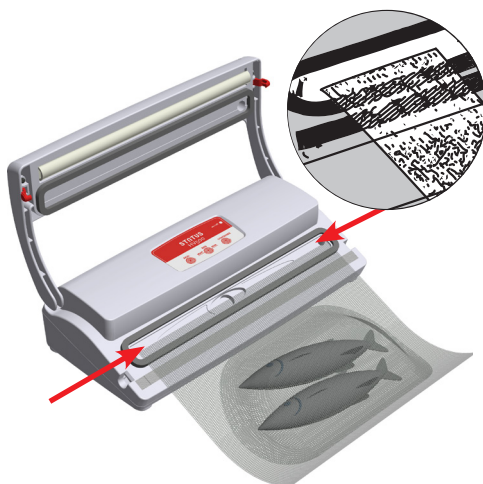


Figure 3: Place the filled bag in the middle of the Vacuum Channel (between salient circle line - see arrows).

- e.) Close the appliance, press on the lid and hold it down.
- f.) Activate the Vacuum Packing of Bag button (Item 2 in Figure 1). Hold lid pressed until indicator light begins to shine with its full power. The bag will be vacuum packed and sealed automatically. Due to high vacuum pressure the lid stays closed while the machine operates. If the lid opens during this process then press the lid down firmly.
- g.) When the sealing process is complete, wait for the lid to release automatically and remove the bag.

Check the seal - it should be smooth and transparent over its whole width.

***RECOMMENDATION:** When vacuum packing greasy products (especially bacon) it is strongly recommended to reverse the outside edges of bag, put the item inside and reverse the edges back again. This keeps the area to be sealed free of grease.

WARNING: If the machine starts sucking liquid when an item is vacuum packed, interrupt the vacuum packing process immediately by pressing the Stop button (Item 2 in Figure 1).

2.2.4. VACUUM PACKING OF FOODS WHICH ARE EASILY CRUSHED

When vacuum packing foods which are easily crushed or contain a lot of water (fresh fruit, salads, mushrooms, bread, pastry) less vacuum should be used (from 0 to -300 mbar).

With the “manual vacuum packing” function you can interrupt the automatic process and initiate the sealing of the bag at reduced pressure.

- a.) Place the items to be vacuum packed in the bag.
- b.) Make sure that inner surfaces to be sealed are clean, dry and free from food materials
- c.) Place the filled bag on the work surface in front of the appliance and pull it to the middle of Vacuum Channel (between black gaskets - Item 7 in Figure 1).
- d.) Make sure that the bag placed on the Sealing Strip is completely smooth (not creased).
- e.) Close the lid and secure it with side locks (Items 9 and 10 in Figure 1): press on one of the lid edges and push the lock horizontally to set it in the allotted space (see the figures below).
- f.) Activate the Start button (Item 2 in Figure 1) and press on the lid.
- g.) When you are satisfied with the amount of the air removed, or when the liquid starts pouring towards appliance, press the Stop button (Item 2 in Figure 1). The pump stops immediately and the sealing process begins.
- h.) During sealing, the light (On/Off) illuminates 100%.
- i.) Unlock the appliance: press on the lid edges to open the lock. You can press both edges simultaneously or individually.
- j.) Check the seal, it should be transparent and uniform. If it is not, repeat the sealing process only on

the rim of the bag (as in the procedure for making a bag from a foil roll). It is recommended to follow these instructions each time you vacuum package manually.



Figure 4: Lock the appliance: press on the lid edges (simultaneously or individually) and push side locks inwards.

For instructions on vacuum packing of various types of food see Item 3 on page 11.



Figure 5: Unlocked vacuum sealer.



Figure 6: Locked vacuum sealer.

2.2.5. VACUUM PACKING USING VACUUM CONTAINERS AND LIDS

The HV500 also includes an Accessory Hose and Port which can be used for vacuum packing of Status' vacuum containers and lids.

- Insert the opening of the Accessory Hose into the Accessory Port (see Figure 7) on the right side of the Vacuum Channel.
- Attach the Accessory Hose and Port to the valve of the chosen vacuum container.
- Press the Container button (Item 3 in Figure 1) to vacuum the container. When the correct negative pressure is reached, the process stops automatically.

When vacuum packing liquid foods (soups, sauces, etc) there should be at least 1.5 cm between the surface of the liquid and the lid.



Figure 7: Vacuum Packing Using Containers.

2.2.6. TROUBLESHOOTING: HAVE YOU VACUUM PACKAGED AN ITEM CONTAINING A LOT OF LIQUID?

A liquid trap is incorporated in the appliance. Its task is to prevent serious damages when the liquid from foods enters the appliance. The liquid trap can be emptied if necessary.

This small container is designed to collect small amounts of excess liquid from foods. The liquid trap is located on the bottom of the machine.

If you need to empty it, follow the instructions:

- Unplug the machine.
- Remove the container by twisting it anticlockwise, and pulling out.
- Drain liquid, clean the container, clean the filter thoroughly (dark pad) and dry it.
- Insert the container back into the machine and make sure you twist fully clockwise.

WARNING: The container is only intended for collecting a small quantity of liquid (a few drops). If a larger quantity of liquid enters the machine then switch the machine off immediately and consult an authorised repair service.

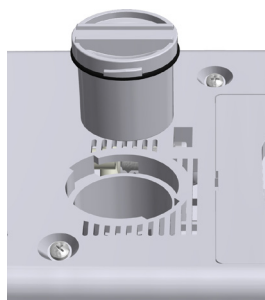


Figure 8: Container for excess liquid.

3. VACUUM PACKING DIFFERENT TYPES OF FOOD

Vacuum packing is not a substitute for freezing or refrigeration. Despite being vacuum packed foods still have to be stored in the refrigerator or freezer or in a cool place (e.g. dried meat products in a cellar).

Do not use bags or rolls for packing foods which contain a lot of liquid.

Soups, sauces and liquids should be either pre-frozen before packing in a vacuum bag or vacuum packed in a vacuum container.

Boiled meat, raw meat and fish: For best results we recommend you to pre-freeze meat and fish for 1-2 hours prior to vacuum packing to ensure the retention of juices and shape, and to help guarantee a good seal. If pre-freezing is not possible, place a folded paper towel between the meat and the top of the bag, avoiding the area to be sealed. Leave the paper towel in the bag when vacuum packing to absorb excess moisture and juices.

Note: Beef may appear darker after vacuum packing due to the removal of oxygen. However, this does not indicate it is spoiled.

Vegetables: When storing in the refrigerator vegetables should be blanched prior to vacuum packing. When freezing the blanching is optional. The process of blanching stops the enzyme action and preserves flavour, colour and texture. One to two minutes in boiling water is enough for fresh leaf vegetables or beans. For chopped zucchini or broccoli and other cruciferous vegetables allow 3 to 4 minutes, for carrots allow 5 minutes. After blanching, submerge the vegetables in cold water to stop the process then dry them with a paper towel prior to vacuum packing.

We recommend you to store leaf vegetables in vacuum containers. They should first be washed and dried with a paper towel, and then stored in a vacuum container. This way spinach and lettuce will stay fresh up to 2 weeks when refrigerated.

Herbs: Herbs containing a high portion of essential oils, such as sage, thyme, rosemary or peppermint are not suitable for vacuum packing but only for drying. Basil, tarragon, garden dill, parsley and chive should be frozen. If dried, they lose too much flavour.

Mushrooms, raw garlic and raw potatoes: We strongly recommend the "manual vacuum packing" function. Only hard, meaty and fresh mushrooms are suitable for vacuum packing and freezing. First wash and dry the mushrooms, then chop them with a fine knife and store them in small quantities. Almost all types of mushrooms should be blanched. We recommend that you put them in the freezer for half an hour before vacuum packing. Do not thaw the mushrooms before preparing them. Boil frozen mushrooms in hot salty water or add them to sauces.

Coffee: If you want to properly vacuum package coffee or other ground food with HV500, leave the items in their original packaging and place them into the Status' bag. If you do not have the original packaging, use a regular bag and insert it in the Status' bag. This way you can prevent beans or ground items from being sucked into the machine.

Thawing of vacuum packaged foods: Foods should always be thawed in the refrigerator to preserve quality.

4. BENEFITS OF VACUUM PACKING

4.1. WHAT IS VACUUM?

Oxygen provokes a chemical change on food and is an important factor in the formation of moulds and bacteria. As a consequence, grease can go rancid, food colour changes, moulds and bacteria multiply, and flavour, vitamins, aroma and minerals are lost. Vacuum packing holds up such undesired

effects, prolongs shelf life and preserves food quality. Only with the help of vacuum packing, i.e. removing air from packing using manual or pump, a suitable environment required to extend food freshness can be established. The process of vacuum packing in containers or bags creates negative pressure.

4.2. WHAT IS FREEZER BURN?

Signs of freezer burn are rancid meat, rotten vegetables and tasteless fruit. Freezer burn appears, when the packaging is permeable to air (common 1 ply PE bags) and frozen food comes into contact with oxygen. Consequently, water evaporates and the

surface of frozen food dries out. Oxygen penetrates through the porous cracks and initiates oxidation. As a consequence, food loses its aroma and fresh taste. We can recognize freezer burn by the white and dry stains on the food.

4.3. DEEP FROZEN OR CHILLED

The advantage of storing deep frozen food is in preserving its essence – vitamins, minerals and taste. Freeze food as quickly as possible.

Reason: When you are freezing food slowly, big ice crystals are formed on the surface. They overgrow food cells and subsequently damage their structure. When you are freezing food quickly, small ice crystals are formed, which do not damage the food to such an extent. If possible, freeze food at constant temperature (–18 °C at the most). Only food of the highest quality should be frozen. Some foods have

to be blanched (scalded) in order to avoid unwanted changes when freezing or deeply refrigerating (enzyme activation, ceased germination). Blanched or in any other way heat treated foods must be chilled before freezing. Otherwise, already stored food can start thawing and become damaged or vacuum can be lost when storing food in vacuum containers. To ensure better quality of stored fruit, use sugar as additive. This also preserves aroma and colours. In the freezer, containers should be kept together as close as possible. The rest of them can be kept in the refrigerator.

4.4. THAWING

Thawing should be a slow (the most suitable way of thawing is in the refrigerator) and natural process. It should not be forced (as it is when putting a bag into hot water or thawing food in the microwave). Once the food is defrosted, it should not be refrozen. When refreezing, mechanical damages occur and food can perish

more quickly. Taste, colour and aroma are decomposed. Micro-organisms (bacteria, mould) multiply much faster. These consequences cannot be eliminated by refreezing. It is therefore recommended that once the foods are thawed, they should be used as soon as possible.

4.5. SOUS VIDE COOKING

Cooking Sous Vide is a modern cooking technique where we cook food in vacuum packed bags immersed in hot water. The Sous Vide technique provides a superior flavour of your home-cooked food, where foods optimally retain their natural taste, colour and texture.

The best Sous Vide vacuum bags on the market are the ones that have the perfect combination of materials

(airtight polyamide and food-grade polyethylene) and where the thickness of materials is just right. Status' bags perfectly fulfill both of these characteristics.

Food for Sous Vide cooking can also be prepared in advance before freezing, for example adding spices and herbs into the vacuum bag together with meat.

4.6. SAILING, CAMPING AND PICNICKING

Vacuum packing is also suitable for picnics, sailing and camping. Food, equipment and documents stay dry and protected. Batteries, mobile phones and cameras can also be vacuum packaged to keep them from getting

wet. Vacuum packing prevents mixing of odours and keeps food from perishing due to moisture. This is particularly important in small spaces.

5. WHY USE STATUS' BAGS AND FOIL ROLLS?

Status vacuum bags are impermeable, food safe, neutral in taste and smell, reusable, BPA free and suitable for Sous Vide cooking. The foodstuffs stored in them will remain the same at least half a year after you have stored it.

The quality of a bag and a foil roll is determined by the thickness of the bag, the combination of materials and the height of the ribbed profile.

The thickness of the bag Status' bags are characterized by a 100 µm thick smooth foil and a 130 µm thick ribbed foil. Their embossed criss-cross pattern helps that the air is removed more effectively during the vacuum sealing process.

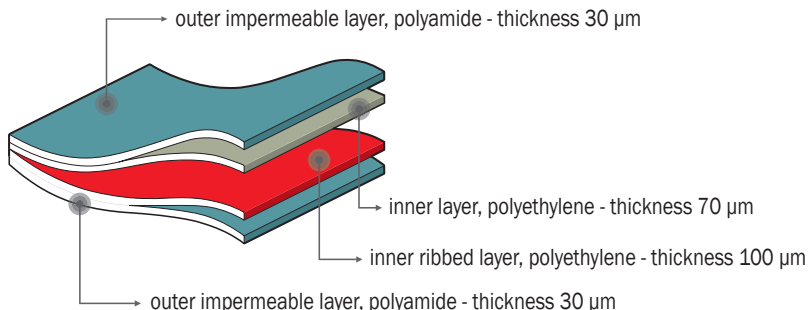
The combination of materials of polyamide and polyethylene, affects the (im)permeability of the bag. Polyamide is the material that affects the permeability

of a bag the most, while the passage of oxygen through the bag affects the quality of stored food. Compared to competing brands Status' bags and foils boast the thickest layer of polyamide (30 µm) which makes them the most quality option for storing food.

The height of the ribbed profile determines the quality of vacuum packing. Status' bags feature at least 0.2 mm high ribbed layer which enables them all to be vacuum sealed uniformly whether it be the first of the 50th vacuum cycle. Thinner bags can be vacuum sealed well during the initial few cycles (maximum of 10 bags) but later even the quality vacuum packing machines cannot establish vacuum or generate enough negative pressure.

Bags and foil rolls are compatible with all brands of vacuum packing machines.

BAG STRUCTURE



VACUUM BAGS AND FOIL ROLL SETS

Foil roll	4 ply foil (PA/PE) <ul style="list-style-type: none"> length 3000 mm x width 200 mm, 4-piece set length 3000 mm x width 280 mm, 3-piece set length 3000 mm x width 120 mm (for salami), 5-piece set
Bags for vacuum packing	4 ply foil (PA/PE) <ul style="list-style-type: none"> length 280 mm x width 200 mm, 40-piece set and 100-piece set length 360 mm x width 280 mm, 25-piece set and 100-piece set length 550 mm x width 120 mm (for salami), 30-piece set and 100-piece set
Thickness of the foil	100 µm (smooth, unribbed part) and 130 µm (structured ribbed part of the foil)
Quality of the foil	Impermeable, two-ply, food-grade, neutral in taste and smell, reusable, microwave safe, appropriate for Sous Vide cooking.

6. COMPARATIVE STORAGE TABLES

Source: Status' Development Dept. manufacturer

6.1. COMPARATIVE TABLE OF FOOD STORAGE IN THE REFRIGERATOR

Type of food	Regular storage	Vacuum storage
Boiled food	2 days	10 days
Fresh meat	2 days	6 days
Fresh poultry	2 days	6 days
Boiled meat	4-5 days	8-10 days
Fresh fish	2 days	4-5 days
Cold meats	3 days	6-8 days
Smoked sausages	90 days	365 days
Hard cheeses	12-15 days	50-55 days
Soft cheeses	5-7 days	13-15 days
Fresh vegetables	5 days	18-20 days
Fresh herbs	2-3 days	7-14 days
Washed lettuce	3 days	6-8 days
Fresh fruit	3-7 days	8-20 days
Desserts	5 days	10-15 days

Tip: Before vacuum packing properly chill the food.

6.2. COMPARATIVE TABLE OF FOOD STORAGE IN CUPBOARDS AND ON SHELVES

Type of food	Regular storage	Vacuum storage
Bread/rolls	2-3 days	7-8 days
Pastry	120 days	300 days
Dried food	10-30 days	30-90 days
Raw rice/pasta	180 days	365 days
Coffee/tea	30-60 days	365 days
Wine	2-3 days	20-25 days
Non-alcoholic drink (sealed)	7-10 days	20-25 days
Non-alcoholic drink in a vacuum jar	2-3 days	7-10 days
Baking goods	2-3 days	7-10 days
Hazelnuts, walnuts etc.	30-60 days	120-180 days
Crackers/potato chips	5-10 days	20-30 days

6.3. COMPARATIVE TABLE OF FOOD STORAGE IN THE FREEZER

Type of food	Regular storage	Vacuum storage
Fresh meat	6 months	18 months
Ground meat	4 months	12 months
Poultry	6 months	18 months
Fish	6 months	18 months
Fresh vegetables	8 months	24 months
Mushrooms	8 months	24 months
Herbs	3-4 months	8-12 months
Fruit	6-10 months	18-30 months
Cold meats	2 months	4-6 months
Baking goods	6-12 months	18 months
Coffee beans	6-9 months	18-27 months
Ground coffee	6 months	12-34 months
Bread/rolls	6-12 months	18-36 months

Only approximate time of duration is indicated in the tables, as it depends on the initial state (freshness) and way of preparing food. We have considered storage of food at +3 °C / +5 °C in the refrigerator and at -18 °C in the freezer.

7. TROUBLESHOOTING

PROBLEM:	WHAT TO DO:
HV500 does not respond when I press the buttons.	<ul style="list-style-type: none"> • Make sure the machine is plugged in. • If socket is on but you have no power, check the socket with another appliance that you know works. • Check the power cord for any damage – cracks or splitting. • Your machine may switch off automatically to avoid overheating. Allow it to cool down for a few minutes and then carry on as normal. We strongly recommend you take into account 120 seconds between each vacuum packing.
Air remains in the bag.	<ul style="list-style-type: none"> • Make sure you have fully placed open end of the bag in the middle of Vacuum Channel. • Ensure that the lid of the machine is firmly pressed down to make certain a vacuum is established. If you can open it, you didn't press hard enough and the vacuum couldn't have been established. Repeat the procedure. • Check your bag for any damage – splits, perforations or bubbles. <p>Test: Seal bag and submerge it in water. On the places where bag is damaged, bubbles will appear.</p> <ul style="list-style-type: none"> • When using continuous rolls make sure that the first sealing edge is firmly sealed.
The vacuum doesn't hold on the bags.	<ul style="list-style-type: none"> • Check the sealing areas of the lid are free from any dirt, grease or food particles, and that they are firmly in place. • Ensure that the bag is totally clean on the edges – thoroughly remove any food particles or liquid and ensure the bag is completely dry. • If you are sealing anything with sharp edges (e.g. bones) make sure they cannot pierce the bag during the vacuum process. • Note: cover sharp edges with a paper towel, or similar, prior to sealing.

PROBLEM:	WHAT TO DO:
Liquid has been sucked up when sealing.	<ul style="list-style-type: none"> Stop the vacuum packing process immediately. Check the special container which is located on the lower part of the appliance for any liquid which may have collected there. Follow the instructions on paragraph number 2.2.7 to clean this container.
Bag melts or cannot be sealed completely.	<ul style="list-style-type: none"> Make sure you are using bags that are at least 100/130 μ thickness and 2 ply. Before sealing ensure that the edges of the bag are clean and dry.
The vacuum doesn't hold when using a container.	<ul style="list-style-type: none"> Ensure that your Hose is correctly inserted as shown in Figure 8. Make sure your container lid is clean and dry and in the correct position. Make certain that your container valve is clean and dry.
I've sealed several bags (up to 5) and it stopped working.	<ul style="list-style-type: none"> Make sure you are using bags that are at least 100/130 μ thickness and 2 ply. Before sealing ensure that the edges of the bag are clean and dry. Check the lid seals are firmly in place all the way around.
HV500 sealed several bags (up to 5 items) and it seems it is not working anymore. Important note about vacuum bags:	<ul style="list-style-type: none"> We strongly recommend vacuum bags of thickness at least 100/130 μ. There are many different types of vacuum bags available on the market so put special attention on quality. Our recommendation is to use original vacuum bags from Status, which are 2 ply and thickness of 100/130 μ.
Machine won't work at all & I've tried all of the above.	<p>Return using a signed for delivery or courier service STATUS d.o.o. Metlika, Ulica Belokr. odreda 19, 8330 Metlika, Slovenia Remember to include your name and address. It is strongly recommended that repairs are made only by authorized persons. EXCEPTIONS FOR WARRANTY CLAIMS: Machines over 24 months old and out of the warranty period. Machines where liquid has been allowed to enter the pump. Machines where home repairs have been undertaken.</p>

8. WARRANTY

This warranty is valid for **two years** from the date of purchase. Evidence of original purchase is required for warranty services, so it is important to keep your sales receipt.

This warranty only covers breakdown caused by electrical or mechanical failure. It does not cover damage caused by liquid entering the machine or breakdown caused by failure to follow the manufacturers instructions.

If you have any comments or questions concerning the functioning of the machine or warranty, please contact us:

STATUS d.o.o. Metlika
Ulica Belokranjskega odreda 19,
8330 Metlika, Slovenia
e-mail: info@status.si

For more information visit our website
<http://innovations.status.si>

9. DECLARATION OF CONFORMITY

The machine complies with all European directives:

- a.) Rules on Electrical Equipment Designed for Use within Certain Voltage Limits

(Official Journal of RS, Nos. 27/2004, 17/2011, 71/2011)

LVD Directive 2014/35, 2006/95/EC

- b.) Rules on Electromagnetic Compatibility

(Official Journal of RS, Nos. 84/2001, 32/2002, 132/2006)

EMC Directive 2014/30, 2004/108/EC

EC declaration of conformity guarantees that the machine is safe and has been inspected and tested to meet all the requirements specified in the applicable standards, directives and regulations.

EC Declaration of conformity for CE marking is located at the seller and can be provided per customer's request.

10. CORRECT DISPOSAL OF YOUR VACUUM MACHINE

When the equipment or parts of the device are no longer fit for use they must be disposed of at the industrial waste landfill in accordance with applicable regulations:

- Decree on the Management of Waste Electrical and Electronic Equipment (WEEE) (Official Journal of RS, no. 107/2006)
Directive 2012/19/EU on Waste Electrical and Electronic Equipment (WEEE)
- Rules on the Restriction of the Use of Certain Hazardous Substances in Electrical and Electronic Equipment (RoHS) (Official Journal of RS, no. 102/2012)
- Rules amending the Rules on the Restriction of the Use of Certain Hazardous Substances in Electrical and Electronic Equipment (Official Journal of RS, no. 20/2014)
Directive 2011/65/EU on the Restriction of the Use of Certain Hazardous Substances in Electrical and Electronic Equipment

Environmentally hazardous components and parts that were built into the device have to be disposed of at specialized sites.



use an official WEEE collection service provider in accordance with directive 2002/96/EC.

Separate collection of individual components of EE equipment prevents negative effects of environmental pollution and minimizes danger to human health, which may occur as a result of improper product disposal. In addition, it enables reuse and recovery of the material, thus saving energy and raw materials. For detailed information on collecting, sorting, reuse and recycling of the product contact the provider of WEEE collection services or the shop where you bought the equipment.

The date of manufacture can be found on the warranty sheet which you received at purchase.

11. HV500 SET

The set includes:

- a.) 1 HV500 appliance
- b.) 1 Foil roll – 200 mm (W) X 1500 mm (L)
- c.) 1 Foil roll – 280 mm (W) X 1500 mm (L)
- d.) 3 Small bags – 200 mm (W) x 280 mm (L)
- e.) 3 Large bags – 280 mm (W) x 360 mm (L)
- f.) 1 Connector used for vacuum packing of containers
- g.) 1 Manual Cutter used for cutting foil
- h.) 1 User Manual

