

# ELECTRICAL VACUUM PUMP

## USER MANUAL

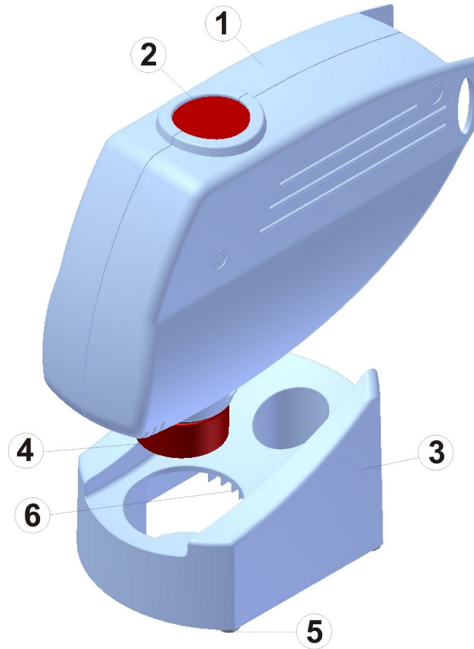


**STATUS**  
innovations



# 1. COMPONENTS AND FUNCTION BUTTONS

The figure below shows the electrical vacuum pump. Important points are marked with numbers and explained in the table:



**Figure 1:** Components\*

1.	<b>Outer casing</b>
2.	<b>Start/Stop Button</b> Initiation and interruption of vacuum packing process.
3.	<b>Stand</b>
4.	<b>Silicon gasket</b> By vacuum packing process it should be placed precisely on the valve of the chosen container.
5.	<b>Rubber tap</b>
6.	<b>Rib</b> In the case the pump is placed on the wall, remove the ribs.
7.	<b>Wall inserted piece</b>
8.	<b>Screws</b>

\* Components are marked with the same numbers also on Figures 3 and 4.

## 1.1. TECHNICAL DATA

<b>Dimensions (with the stand)</b>	Width: 80 mm Depth: 180 mm Height: 136 mm
<b>Weight</b>	Pump with the stand approximately 0,49 kg, adapter approximately 0,6 kg.
<b>Material</b>	ABS plastic
<b>Pump</b>	Single-piston pump (self-oiling – no maintenance necessary)
<b>Vacuum pressure</b>	- 500 mbar
<b>Motor</b>	12 V DC Automatic cut-off after one minute in case of improper use.
<b>Max RPM</b>	3500
<b>Pump volume</b>	11 l/min
<b>Controls</b>	Electronic
<b>Adapter</b>	input: 110-240 V ~ 50-60 Hz, 250 mA output: 12 V DC, 2000 mA

## 1.2. IMPORTANT SAFETY INSTRUCTIONS

- Pay attention on the place, where vacuum pump will be positioned. Working surface must be dry, normal temperature (not hot) and clear from obstructions or water source.
- Check the power cable and electrical outlet before you plug in the appliance. Make sure there are no breakdowns.
- Appliance should be cleaned only with a dry or slightly damp cloth.
- Use the appliance only for the purposes described in the User Manual.
- Warranty is invalid if:
  - the appliance has been repaired by somebody who is not an authorised person or a professional.
  - you use the appliance for unintended purposes.
  - you do not respect safety regulations and do not follow the instructions in the User Manual.

The manufacturer will not accept responsibility for any damage that may occur as a result of not following the User Manual or improper use.

## 1.3. OPERATING CONDITIONS

Maximum ambient temperature in normal use is +40°C; the average of temperatures over a 24-hour period should not exceed +35°C. Minimum ambient temperature is -5°C.

Surrounding air should be clean; relative humidity should not exceed 50% at the maximum temperature of +40°C. Higher relative humidity is allowed at lower ambient temperature (e.g. 90 % at +20°C).

## 2. USAGE

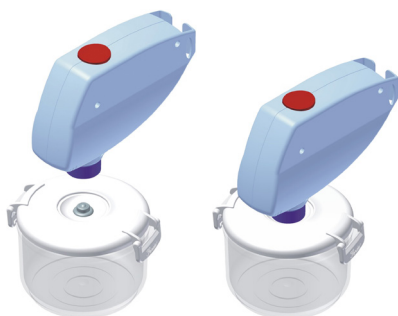
EN

### 2.1. GENERAL INSTRUCTIONS

- a.) When taking the appliance out of its packaging check that all its components are included and undamaged. Make sure no polystyrene fragments are left inside silicon gasket.
- b.) **Read the User Manual before you use the machine for the first time.**
- a) Electrical vacuum pump is a professional appliance adapted to everyday use in households.

### 2.2. INSTRUCTIONS FOR USE

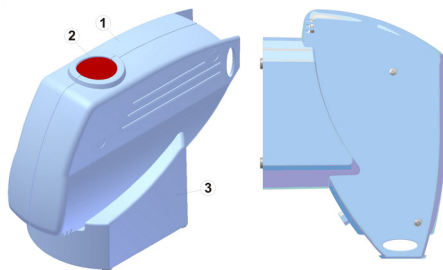
- a) Plug in the appliance.
- b) Place the pump right-angled on the container or lid and push slightly. Make sure that silicon gasket (item 4) is placed on the middle of the valve.
- c) Press **Start/Stop** Button (item 2). The pump will automatically turn off when the vacuum process is completed.
- d) In case of improper use the pump will automatically cut-off after one minute.
- e) During vacuum packing process the pump could be stopped at any time by pressing **Start/Stop** Button.



**Figure 2:** Proper vacuum pump position on the vacuum container

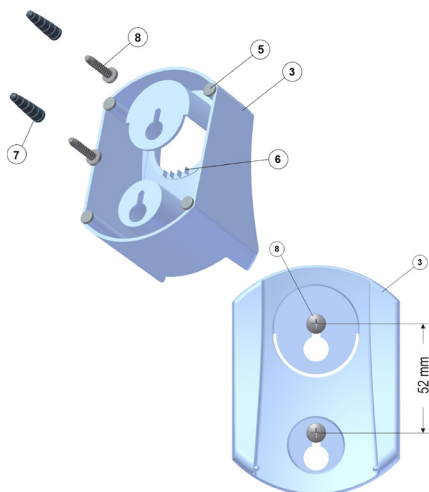
### 2.3. STORAGE

Electrical vacuum pump can be put and stored on the kitchen counter or fixed to the kitchen wall.



**Figure 3:** Position when stored on the counter or on the wall

When fixing stand on the wall remove ribs on the lower side of the stand (see item 6), make holes for the attached wall screws and screw them into the wall. See figures below:



**Figure 4:** Compound parts and fixing the bottom stand on the wall

## 2.4. MAINTENANCE AND CLEANING

- a.) Always unplug the appliance before cleaning.
- b.) Use a soft, damp cloth to clean the machine. Do not use anything which could scratch or damage the surface. Never submerge the appliance in water or place it under running water. Never squirt detergent directly onto or into the machine.
- c.) Before using the appliance make sure that it is completely dry.
- d.) If any case the liquid enters the appliance consult an authorised repair service.

## 2.5. TIME INTERVALS FOR USING ELECTRICAL VACUUM PUMP

When using electrical vacuum pump for vacuum pack larger amounts of food let the pump cool down every 20 minutes for at least 2 minutes.

## 3. WARRANTY

This warranty is valid for two years from the date of purchase. **Evidence of original purchase is required for warranty services**, so it is important to keep your sales receipt.

This warranty only covers breakdown caused by electrical or mechanical failure. It does not cover damage caused by liquid entering the machine or breakdown caused by failure to follow the manufacturers instructions.

If you have any comments or questions concerning the functioning of the appliance or warranty, please contact us on the following address:

### STATUS d.o.o. Metlika

Ulica Belokranjskega odreda 19, 8330 Metlika

Service phone: **+ 386 (0)7/36 91 228**

e-mail: **info@status.si**

More information available also on **www.status.si**.

## 4. DECLARATION OF CONFORMITY

The appliance complies with all European directives:

- a.) Rules on Electrical Equipment Designed for Use within Certain Voltage Limits  
(Official Journal of RS, Nos. 27/2004, 17/2011, 71/2011)  
LVD Directive 2014/35, 2006/95/EC
- b.) Rules on Electromagnetic Compatibility  
(Official Journal of RS, Nos. 84/2001, 32/2002, 132/2006)  
EMC Directive 2014/30, 2004/108/EC

EC declaration of conformity guarantees that the appliance is safe and has been inspected and tested to meet all the requirements specified in the applicable standards, directives and regulations.

EC Declaration of conformity for CE marking is located at the seller and can be provided per customer's request.

## 5. TROUBLESHOOTING

Problem:	What to do:
Pump does not react when pushing the Start/Stop Button.	<ul style="list-style-type: none"> <li>• Check the power cord for any damage – cracks or splitting.</li> <li>• Make sure the machine is plugged in.</li> <li>• Your machine may switch off automatically due to improper use. Wait app. one minute.</li> </ul>
Pump does not vacuum the containers or vacuum does not hold.	<ul style="list-style-type: none"> <li>• Check if cover of vacuum container and silicone gaskets are clean and correctly adjusted on the container.</li> <li>• Check if the valve on the container cover is clean and dry, If not, detach it from the cover and clean it.</li> </ul>
Machine won't work at all & I've tried all of the above.	<p>It is obligatory to contact the service.</p> <p>The manufacturer can not accept responsibility for any damage that may occur as a result of improper use or appliances where home repairs have been undertaken.</p>

## 6. BENEFITS OF VACUUM PACKING

Oxygen provokes a chemical change on food and is an important factor in the formation of moulds and bacteria. As a consequence, grease can go rancid, food colour changes, moulds and bacteria multiply, and flavour, vitamins, aroma and minerals are lost. Vacuum packaging holds up such undesired effects, prolongs shelf life and preserves food quality. Only with the help of vacuum packaging, i.e. removing air from packaging using vacuum pump, a suitable environment required to extend food freshness can be established. The process of vacuum packaging in containers or bags creates negative pressure.

Vacuum appliance, containers and universal lids are indispensable in every kitchen. They are intended for natural storing of food and extending shelf life of raw and boiled food without losing its quality. Storing in the refrigerator, pantry or packaging that extends food freshness does not prevent the oxygen coming in contact with food.

We also have to mention that Status' electrical vacuum pump helps you save money, since you can buy in bulk, repackage your purchase in portions and then vacuum package. Food can be divided into smaller serving portions, vacuum packaged and stored in the refrigerator for a longer period of time.

## 7. CORRECT DISPOSAL OF YOUR ELECTRICAL VACUUM PUMP

When the equipment or parts of the device are no longer fit for use they must be disposed of at the industrial waste landfill in accordance with applicable regulations:

- Decree on the Management of Waste Electrical and Electronic Equipment (WEEE) (Official Journal of RS, no. 107/2006)  
Directive 2012/19/EU on Waste Electrical and Electronic Equipment (WEEE)
- Rules on the Restriction of the Use of Certain Hazardous Substances in Electrical and Electronic Equipment (RoHS) (Official Journal of RS, no. 102/2012)
- Rules amending the Rules on the Restriction of the Use of Certain Hazardous Substances in Electrical and Electronic Equipment (Official Journal of RS, no. 20/2014)  
Directive 2011/65/EU on the Restriction of the Use of Certain Hazardous Substances in Electrical and Electronic Equipment

Environmentally hazardous components and parts that were built into the device have to be disposed of at specialized sites.



The symbol on the product or its packaging indicates that at the end of its life, the product may not be treated as other household waste.

It is your responsibility to dispose the waste appliance in special areas intended for separate collection of waste in your local community or to deliver it to the provider of WEEE collection services.

Separate collection of individual components of EE equipment prevents negative effects of environmental pollution and minimizes danger to human health, which may occur as a result of improper product disposal. In addition, it enables reuse and recovery of the material, thus saving energy and raw materials.

For detailed information on collecting, sorting, reuse and recycling of the product contact the provider of WEEE collection services or the shop where you bought the equipment.

Date of manufacture of vacuum pump appliance can be found on the warranty sheet which you received at purchase.

## 8. ELECTRICAL VACUUM PUMP SET

The set includes:

- 1 Electrical vacuum pump,
- 1 Adapter
- Stand with 4 rubber taps,
- Wall inserted piece,
- Screws,
- User Manual.









**Status d.o.o. Metlika**

Ulica Belokranjskega odreda 19  
8330 Metlika, Slovenia